

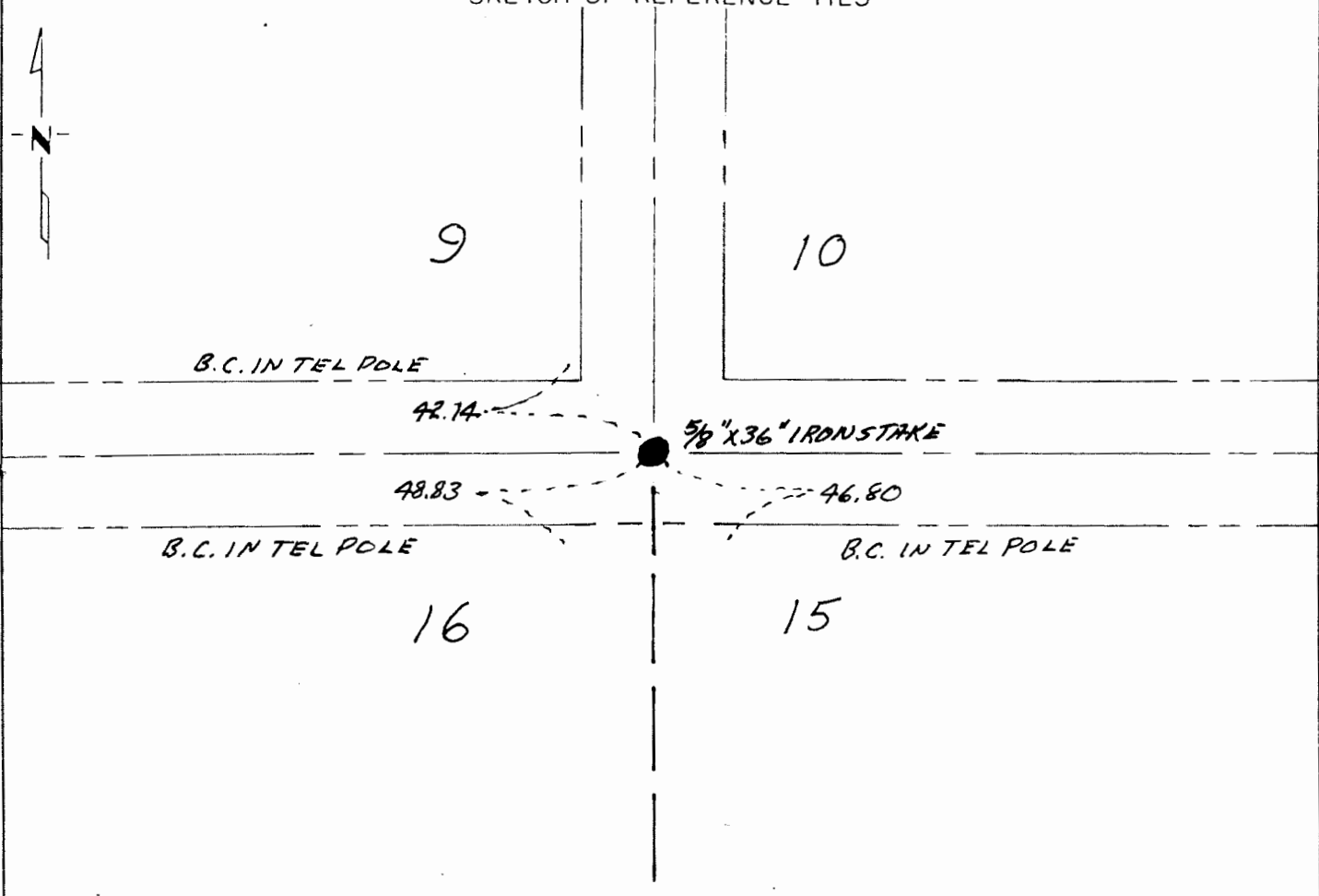
CERTIFICATE OF LOCATION OF GOVERNMENT CORNER

SOUTHEAST Corner of Section 9, Township 107, Range 40, 5TH P. 1/4
STATE OF MINNESOTA, County of MURRAY

At the corner location shown on the sketch:

- On 9-27-88 found a 20"X15" FLAT STONE 36" BELOW THE
DATE SURFACE AT THE INTERSECTION OF TOWNSHIP ROADS
 left monument as found, lowered monument, removed monument (explain)
- On 9-27-88 placed a 5/8"X30" IRON STAKE WITH SURVEY CAP
DATE RIS 6700 OVER CENTER OF STONE

SKETCH OF REFERENCE TIES



Statement of evidence relative to this corner location is on back of page.

I hereby certify that this document and the data contained herein was prepared by me or under my direct supervision.

C. M. Duggins 10-21-88
SIGNATURE DATE

Registration No. 6700

- Land Surveyor, Professional Engineer
- County Surveyor, County Engineer

OFFICE OF THE COUNTY RECORDER
County of _____

I hereby certify that this document was filed in the Co. Recorders office at _____ M. on the _____ day of _____ A.D., 19 _____

County Recorder _____

By _____, Deputy

DOCUMENT NO. _____

SURVEY NO. MURRAY
SIoux ENGINEERING, INCORPORATED
WINDOM, MINNESOTA